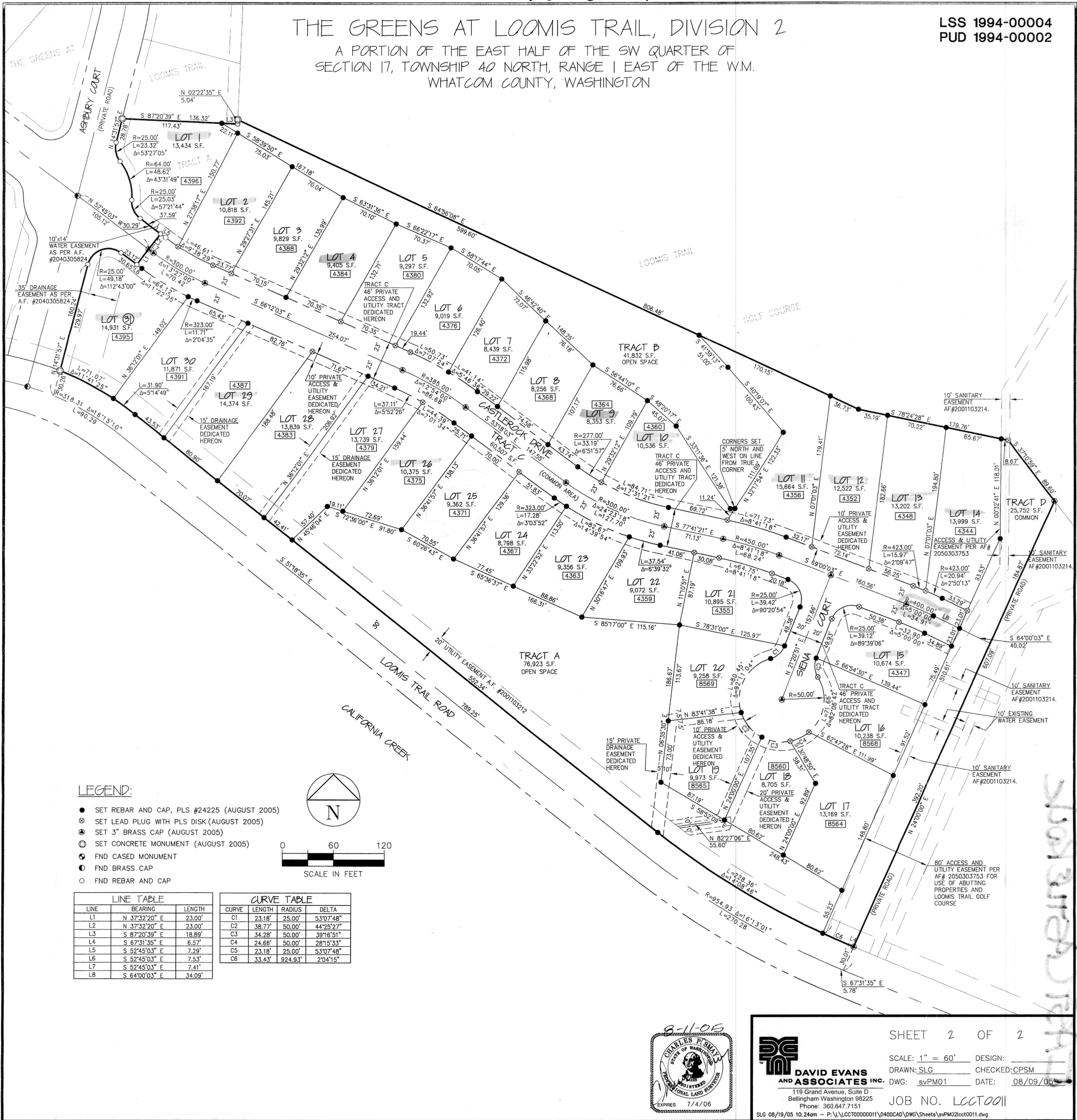


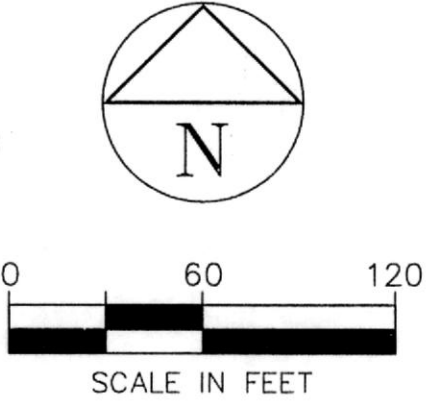
THE GREENS AT LOOMIS TRAIL, DIVISION 2

A PORTION OF THE EAST HALF OF THE SW QUARTER OF SECTION 17, TOWNSHIP 40 NORTH, RANGE 1 EAST OF THE W.M. WHATCOM COUNTY, WASHINGTON



LEGEND:

- SET REBAR AND CAP, PLS #24225 (AUGUST 2005)
- ⊗ SET LEAD PLUG WITH PLS DISK (AUGUST 2005)
- ⊙ SET 3" BRASS CAP (AUGUST 2005)
- ⊕ SET CONCRETE MONUMENT (AUGUST 2005)
- ⊖ FND CASSED MONUMENT
- ⦿ FND BRASS CAP
- FND REBAR AND CAP



LINE	BEARING	LENGTH
L1	N 37°32'20" E	23.00'
L2	N 37°32'20" E	23.00'
L3	S 87°20'39" E	18.89'
L4	S 67°31'35" E	6.57'
L5	S 52°45'03" E	7.29'
L6	S 52°45'03" E	7.53'
L7	S 52°45'03" E	7.41'
L8	S 64°00'03" E	34.09'

CURVE	LENGTH	RADIUS	DELTA
C1	23.18'	25.00'	53°07'48"
C2	38.77'	50.00'	44°25'27"
C3	34.28'	50.00'	39°16'51"
C4	24.66'	50.00'	28°15'33"
C5	23.18'	25.00'	53°07'48"
C6	33.43'	924.93'	2°04'15"



SHEET 2 OF 2

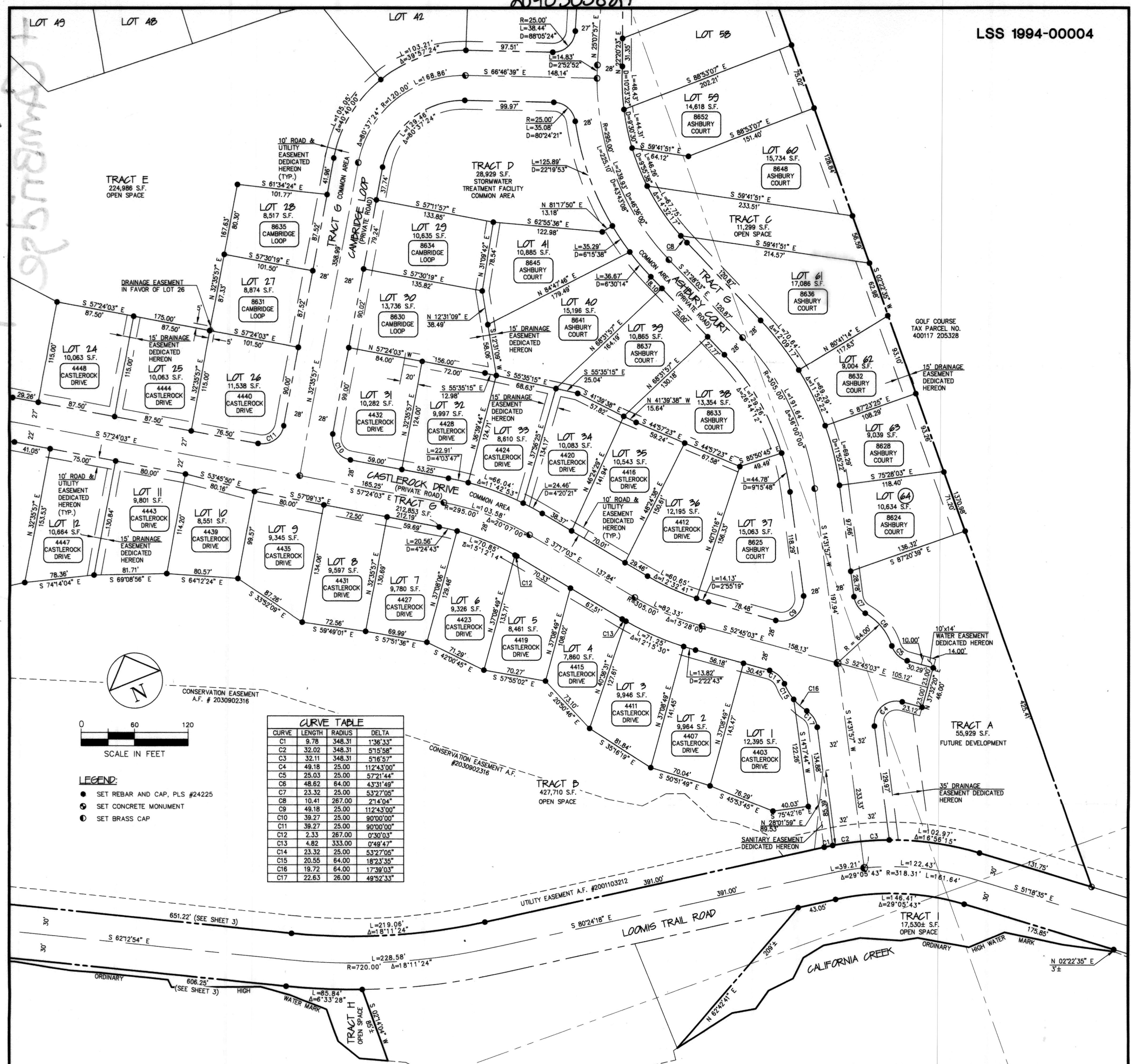
SCALE: 1" = 60' DESIGN: _____
 DRAWN: SLG CHECKED: CPSM
 DWG: svPM01 DATE: 08/09/05
 JOB NO. LCCT001

DAVID EVANS AND ASSOCIATES INC.
 119 Grand Avenue, Suite D
 Bellingham Washington 98225
 Phone: 360.647.7151

LSS 08/19/05 10:24am - P:\LCCT0000011\0400CAD\DWG\Sheets\svPM02\lcc001.dwg

2040305824

LSS 1994-00004

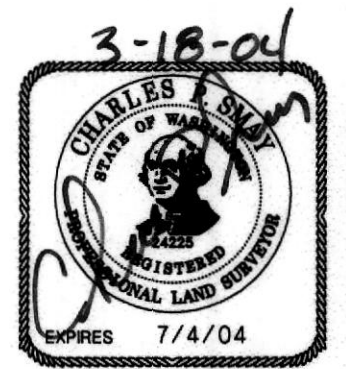


CURVE TABLE

CURVE	LENGTH	RADIUS	DELTA
C1	9.78	348.31	1°36'33"
C2	32.02	348.31	5°15'58"
C3	32.11	348.31	5°16'57"
C4	48.18	25.00	112°43'00"
C5	25.03	25.00	57°21'44"
C6	48.62	64.00	43°31'49"
C7	23.32	25.00	53°27'05"
C8	10.41	267.00	2°14'04"
C9	49.18	25.00	112°43'00"
C10	39.27	25.00	90°00'00"
C11	39.27	25.00	90°00'00"
C12	2.33	267.00	0°30'03"
C13	4.82	333.00	0°49'47"
C14	23.32	25.00	53°27'05"
C15	20.55	64.00	18°23'36"
C16	18.72	64.00	17°39'03"
C17	22.63	26.00	49°52'33"

- LEGEND:**
- SET REBAR AND CAP, PLS #24225
 - SET CONCRETE MONUMENT
 - SET BRASS CAP

THE GREENS AT LOOMIS TRAIL
 A PORTION OF THE SW QUARTER OF THE NW QUARTER AND
 THE NORTH HALF OF THE SW QUARTER OF
 SECTION 17, TOWNSHIP 40 NORTH, RANGE 1 EAST OF THE W.M.
 WHATCOM COUNTY, WASHINGTON



DAVID EVANS AND ASSOCIATES INC.
 119 Grand Avenue, Suite D
 Bellingham Washington 98225
 Phone: 360.647.7151

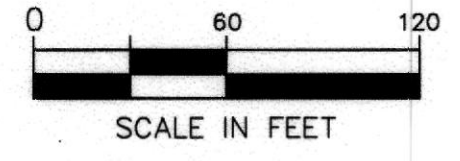
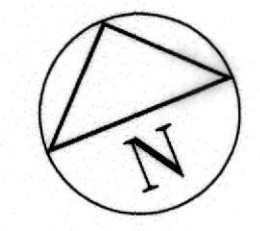
SHEET 2 OF 4
 SCALE: 1" = 60' DESIGN: _____
 DRAWN: SLG CHECKED: CPSM
 DWG: JN01sPL02 DATE: 3/1/04
 JOB NO. JNK1000
 G:\A 03/18/04 10:43am - P:\JNK0001-0001\dwg\Sheets\N01sPL02.dwg

98tl.d

2040305824

LSS 1994-00004

THE GREENS AT LOOMIS TRAIL
A PORTION OF THE SW QUARTER OF THE NW QUARTER AND
THE NORTH HALF OF THE SW QUARTER OF
SECTION 17, TOWNSHIP 40 NORTH, RANGE 1 EAST OF THE W.M.
WHATCOM COUNTY, WASHINGTON



LEGEND:

- SET REBAR AND CAP, PLS #24225
- ⊙ SET CONCRETE MONUMENT
- SET BRASS CAP

TRACT F
392,988 S.F.
FUTURE DEVELOPMENT

LOT 50
32,002 S.F.
8696 ASHBURY COURT

LOT 51
12,528 S.F.
8684 ASHBURY COURT

LOT 52
11,001 S.F.
8680 ASHBURY COURT

LOT 53
11,637 S.F.
8676 ASHBURY COURT

LOT 54
11,289 S.F.
8672 ASHBURY COURT

LOT 55
17,377 S.F.
8668 ASHBURY COURT

LOT 56
13,113 S.F.
8664 ASHBURY COURT

LOT 57
13,795 S.F.
8660 ASHBURY COURT

LOT 58
14,284 S.F.
8658 ASHBURY COURT

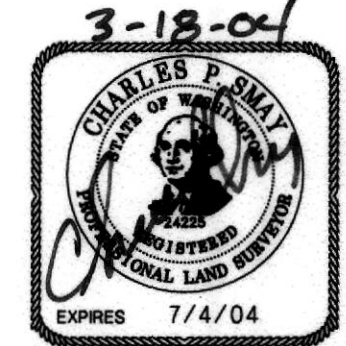
LOT 59
14,618 S.F.
8652 ASHBURY COURT

LOT 60
15,734 S.F.
8648 ASHBURY COURT

TRACT E
224,986 S.F.
OPEN SPACE

TRACT D
28,929 S.F.
STORMWATER TREATMENT FACILITY
COMMON AREA

TRACT C
OPEN SPACE



DAVID EVANS AND ASSOCIATES INC.
119 Grand Avenue, Suite D
Bellingham Washington 98225
Phone: 360.647.7151

SHEET 4 OF 4
SCALE: 1" = 60'
DESIGN: _____
DRAWN: SLG CHECKED: CPSM
DWG: JN01sP04 DATE: 3/01/04
JOB NO. JNK10001
GALA 03/18/04 10:44am - P:\JNK00001-0001\dwg\Sheets\JN01sP04.dwg

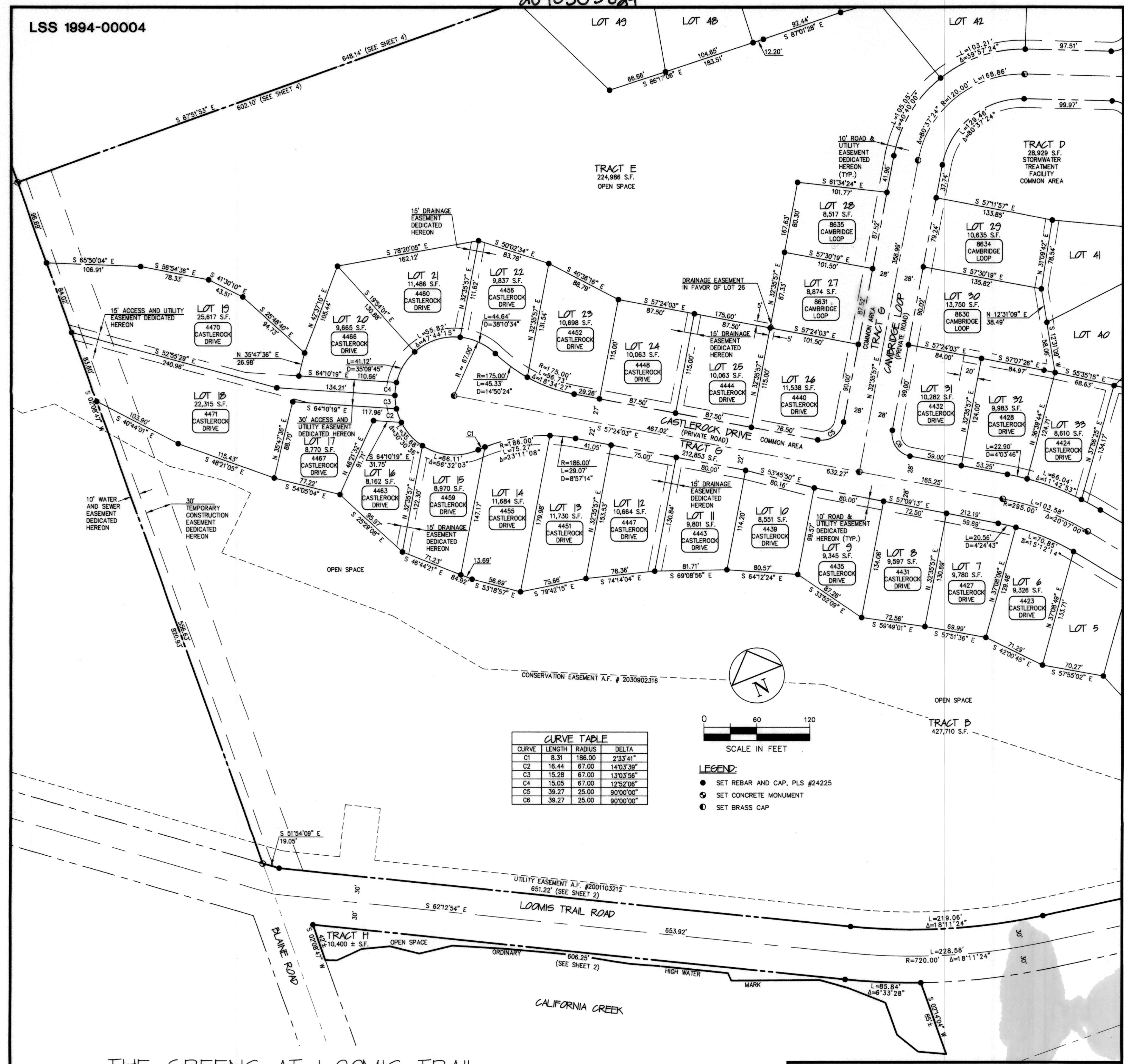
Project A 750M

P.1785

P.1785

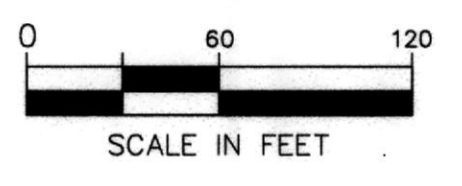
2040305824

LSS 1994-00004



CURVE TABLE

CURVE	LENGTH	RADIUS	DELTA
C1	8.31	186.00	2°33'41"
C2	16.44	67.00	14°03'39"
C3	15.28	67.00	13°03'56"
C4	15.05	67.00	12°52'06"
C5	39.27	25.00	90°00'00"
C6	39.27	25.00	90°00'00"



- LEGEND:**
- SET REBAR AND CAP, PLS #24225
 - SET CONCRETE MONUMENT
 - SET BRASS CAP

THE GREENS AT LOOMIS TRAIL
 A PORTION OF THE SW QUARTER OF THE NW QUARTER AND
 THE NORTH HALF OF THE SW QUARTER OF
 SECTION 17, TOWNSHIP 40 NORTH, RANGE 1 EAST OF THE W.M.
 WHATCOM COUNTY, WASHINGTON



DAVID EVANS AND ASSOCIATES INC.
 119 Grand Avenue, Suite D
 Bellingham, Washington 98225
 Phone: 360.647.7151

SHEET 3 OF 4
 SCALE: 1" = 60' DESIGN: _____
 DRAWN: SLG CHECKED: CPSM
 DWG: JN01sPLO3 DATE: 3/01/04
 JOB NO. JNK10001
 G:\A 03/18/04 10:44am - P:\N000001-0001\dwg\Sheets\JN01sPLO3.dwg

Wm. C. Evans

P.1785